

1025 SE PINE ST & NE CORNER OF SE 10TH AVE | PORTLAND, OR

THE OFFICES AT TROY LAUNDRY

HOME TO SOHO HOUSE PORTLAND & MEMOIR BUCKMAN



OWNED BY
ADVENTUROUS
JOURNEYS

LEASING BY
 Kidder
Mathews

Join Soho House with 8,100 - 17,475 SF of renovated creative office space at Portland's historic Troy Laundry Building



Dynamic mixed-use development offering high-end retail, residential apartments, and a 24/7 dynamic environment for office occupants



On-site security



Located in the heart of the Central Eastside business district



Restored space offers open, adaptable floor plans for tenant customization



Walking distance to award-winning restaurants, such as James Beard Award winner kann, and shopping corridors



Monumental brand awareness located at the base of Soho House Portland



Blocks from Portland's leading companies and offices at Burnside Bridgehead



Effortless commuting with bus stops and Max line nearby, and under 1 mile to I-5, I-84, and Hwy 99

Located in Portland's Enterprise Zone

The Oregon E-zone Program is a state economic development program that allows property tax exemptions for up to five years in exchange for certain public benefits. Participating firms are required to meet the program requirements set by state statute and the local sponsor. The Portland Enterprise Zone exists primarily to incentivize firms to invest major capital outlays and to create or retain quality jobs by offering property tax exemptions designed to encourage existing and new businesses. Prosper Portland's engagement with dozens of non-profits related to entrepreneurship, workforce development, education, and social justice and community building allows businesses to quickly find the right partnerships to succeed in meeting public benefits.





REPRESENTATIVE OFFICE SPACE



Innovative
workspace
designed to
inspire

Open floor plan for tenant customization

16' ceiling heights

Historic timber construction providing a warm creative feel

Seismically updated space

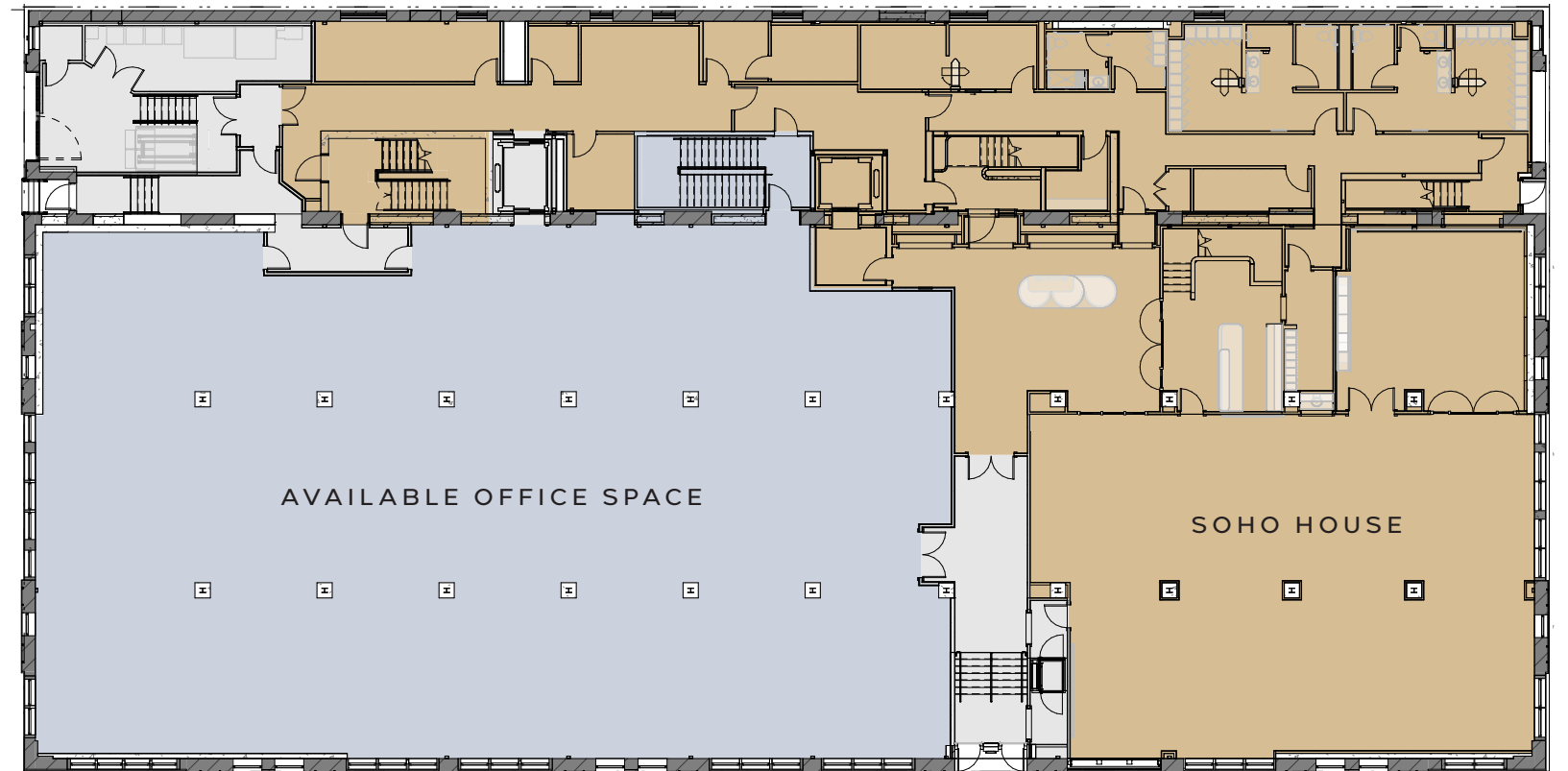
Expansive window line

Private entry available

Can be leased on its own

8,100
SQUARE FEET

First Floor Plan



Open floor plan for tenant customization

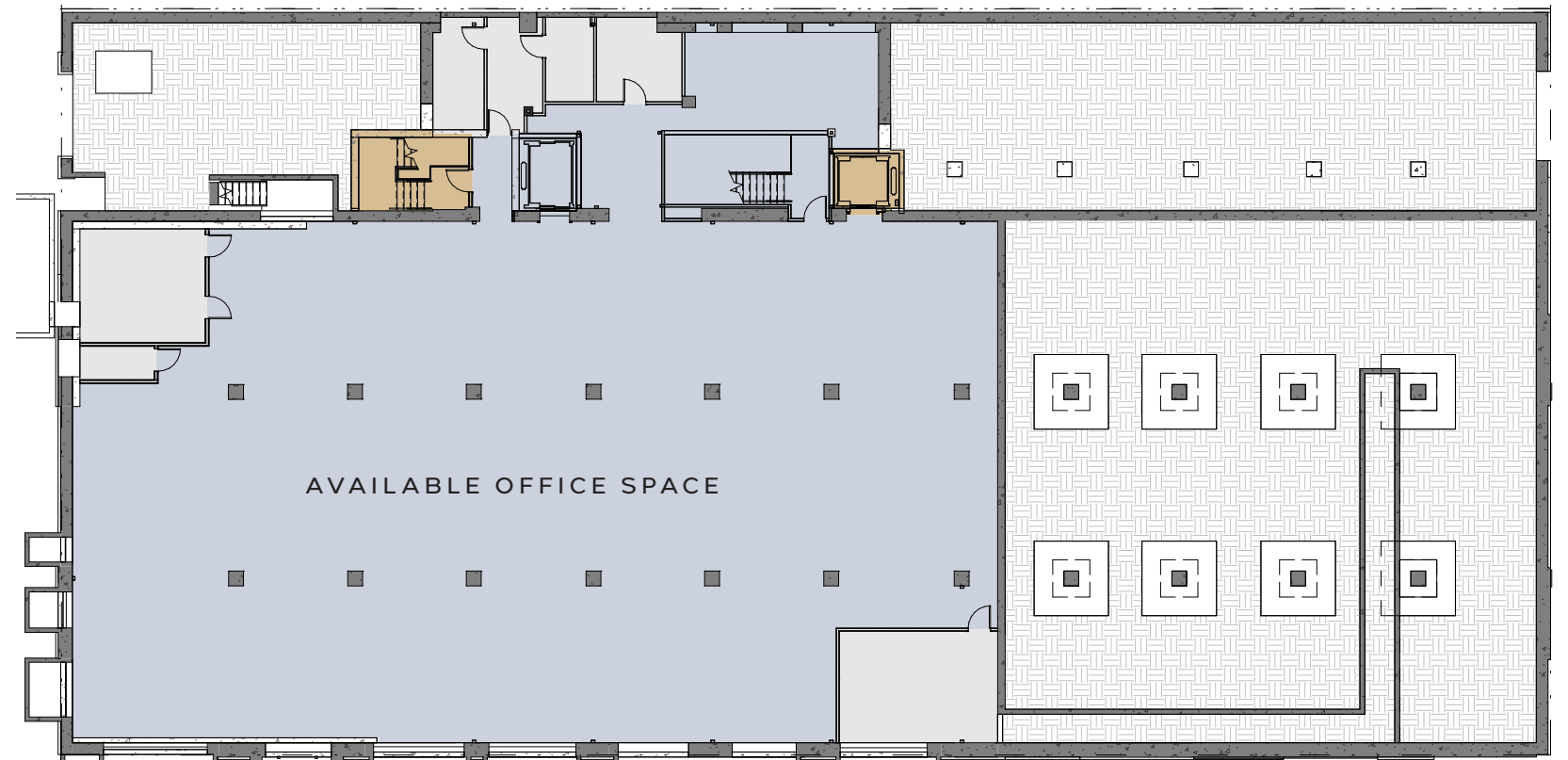
13' ceiling height

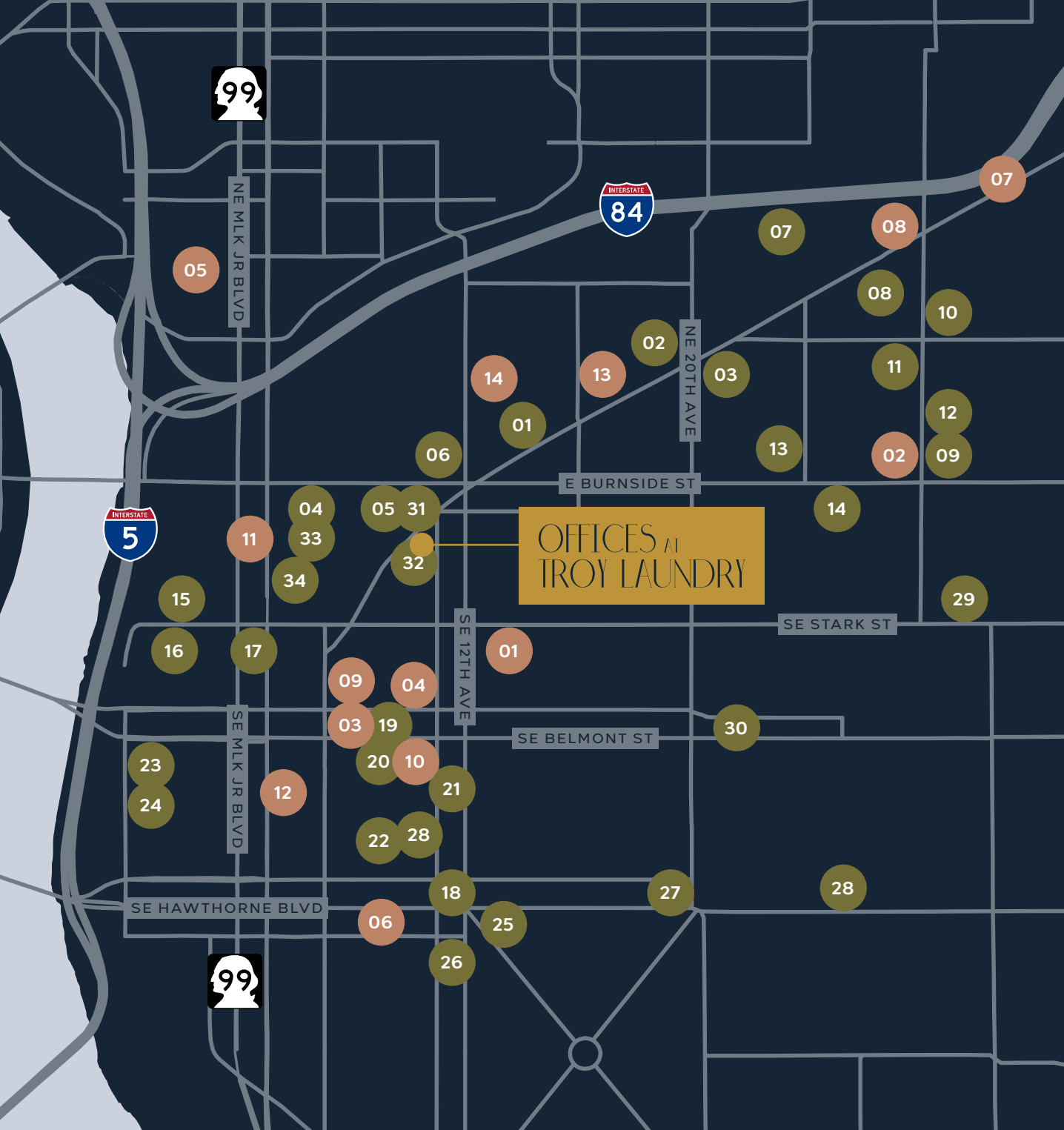
Features ground windows providing natural light

Potential to connect both floors with internal stairwell

9,375
SQUARE FEET

Lower Level Plan





Your hub for prime
retail & dining hotspots

FOOD & BEVERAGE

- 01 Voodoo Doughnut, Too!
- 02 Henry Higgins Boiled Bagels
- 03 Blue Diamond Bar & Grill
- 04 Rontoms
- 05 Doug Fir Lounge
- 06 Noble Rot
- 07 Culmination Brewing
- 08 Church
- 09 The Sudra
- 10 Pambiche
- 11 Stammtisch
- 12 City State Diner & Bakery
- 13 Screen Door
- 14 The Matador
- 15 Produce Row Cafe
- 16 Olympia Provisions
- 17 My Father's Place
- 18 Le Bistro Montage
- 19 Cascade Brewing Barrel House
- 20 Rogue Eastside Pub & Pilot Brewery
- 21 Kachka
- 22 White Owl Social Club
- 23 Hair of the Dog Brewing Company
- 24 Water Avenue Coffee
- 25 Lardo
- 26 Teote House Cafe
- 27 Jam On Hawthorne
- 28 Coava Coffee Roasters
- 29 Goodfoot Pub & Lounge
- 30 The Low Tide Lounge
- 31 Normandie
- 32 Jackie's Sports Bar
- 33 Nong's Khao Man Gai
- 34 kann

RETAIL & LIFESTYLE

- 01 Revolution Hall
- 02 Laurelhurst Theater
- 03 Grand Central Bowl & Arcade
- 04 Holocene
- 05 Oregon Convention Center
- 06 Helium Comedy Club
- 07 Oregon Mountain Community
- 08 The Venderia at The Zipper
- 09 Next Adventure
- 10 Guardian Games
- 11 evo Portland
- 12 Rejuvenation
- 13 The Circuit Bouldering Gym
- 14 Portland Tennis Center



98
BIKE SCORE



96
WALK SCORE



Embrace the
local flavor



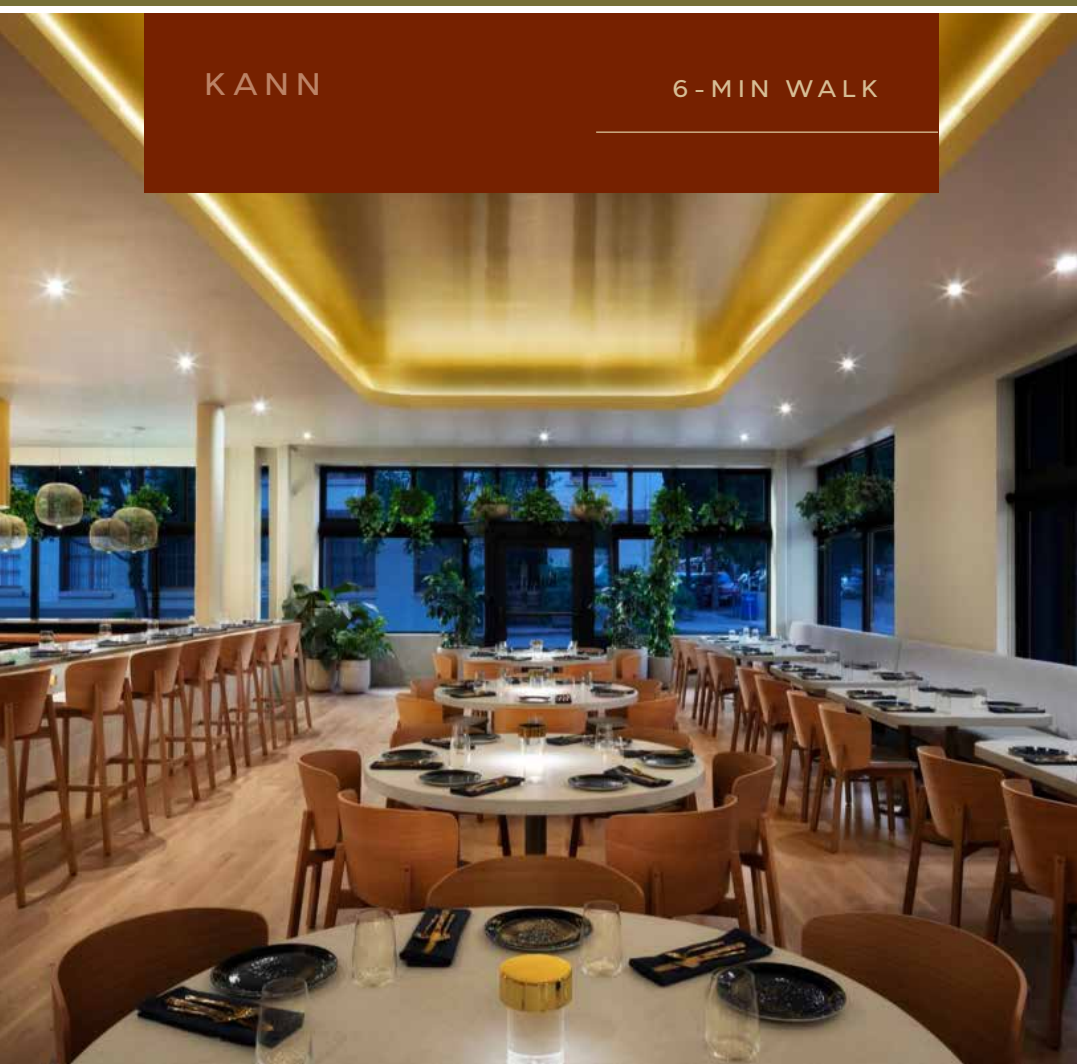
NORMANDIE

2-MIN WALK



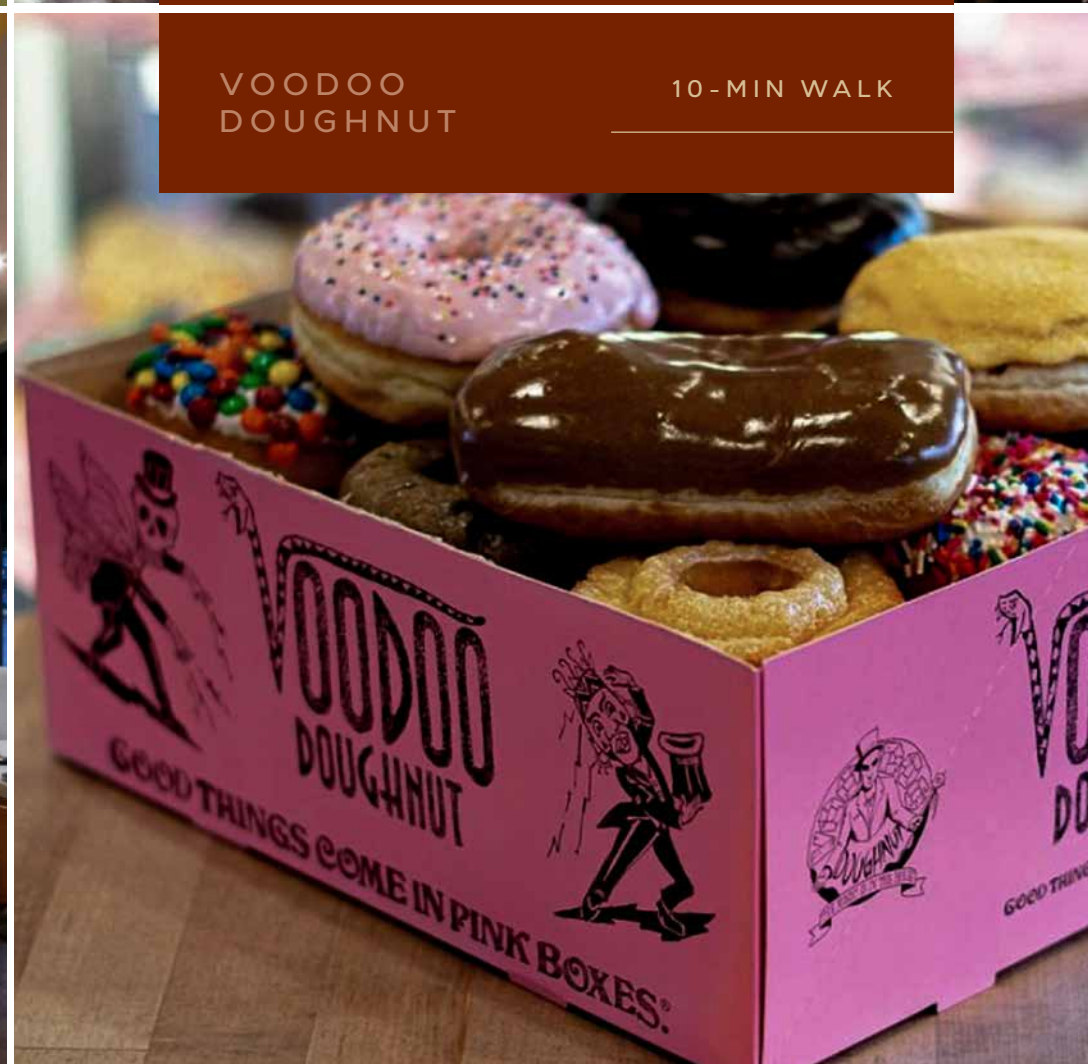
JACKIE'S
SPORTS BAR

1-MIN WALK



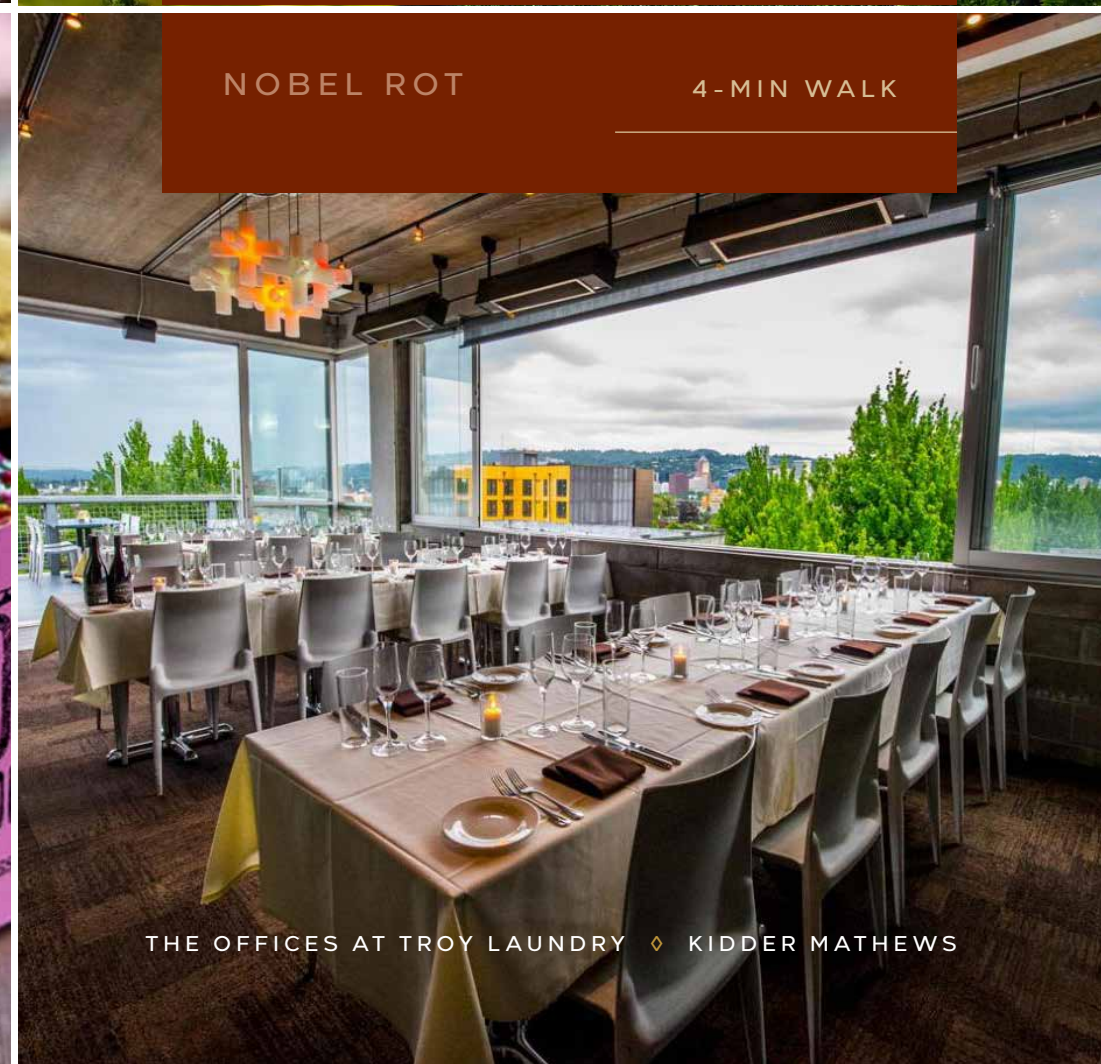
KANN

6-MIN WALK



VOODOO
DOUGHNUT

10-MIN WALK



NOBEL ROT

4-MIN WALK



NEXT
ADVENTURE

7-MIN WALK



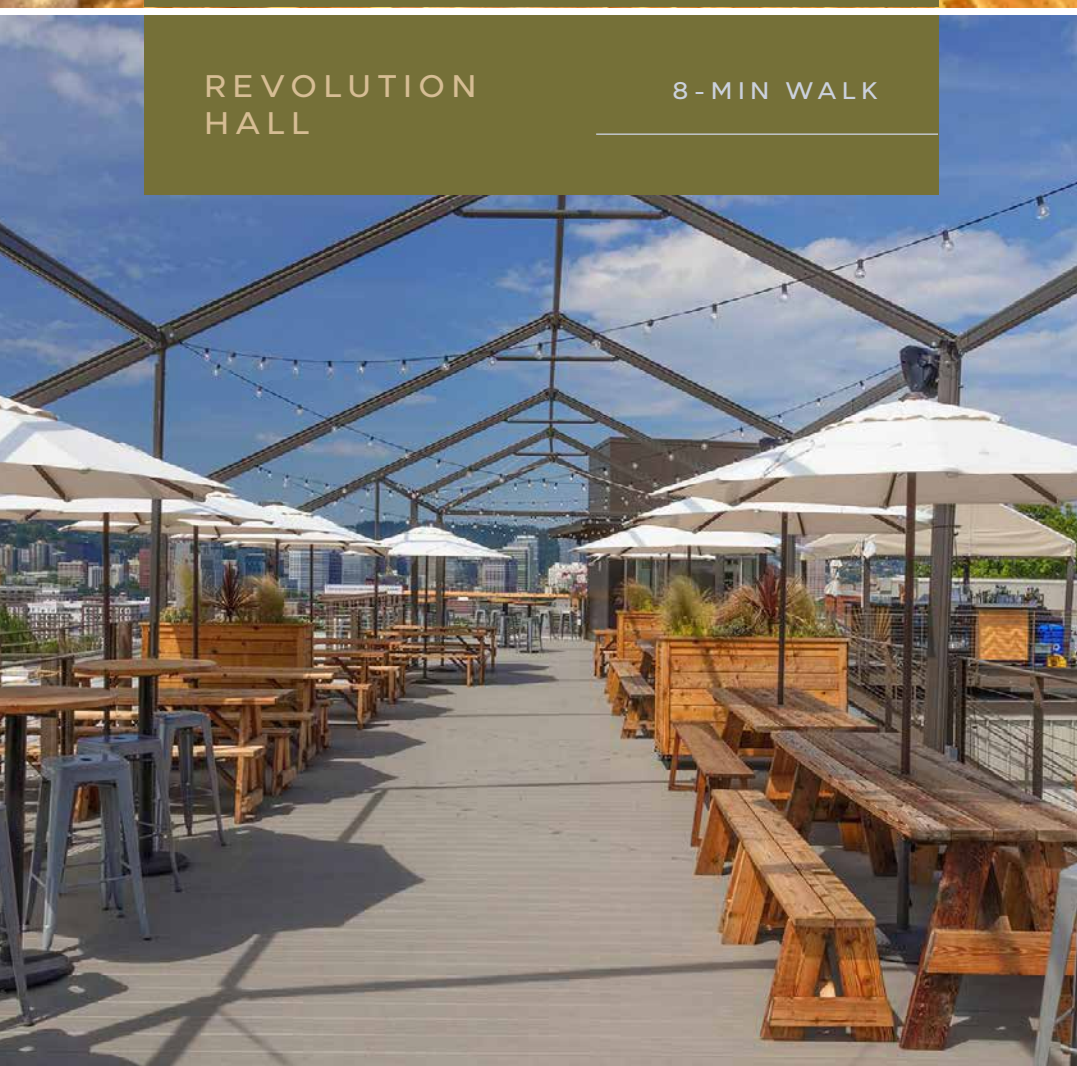
GRAND CENTRAL
BOWLING

8-MIN WALK



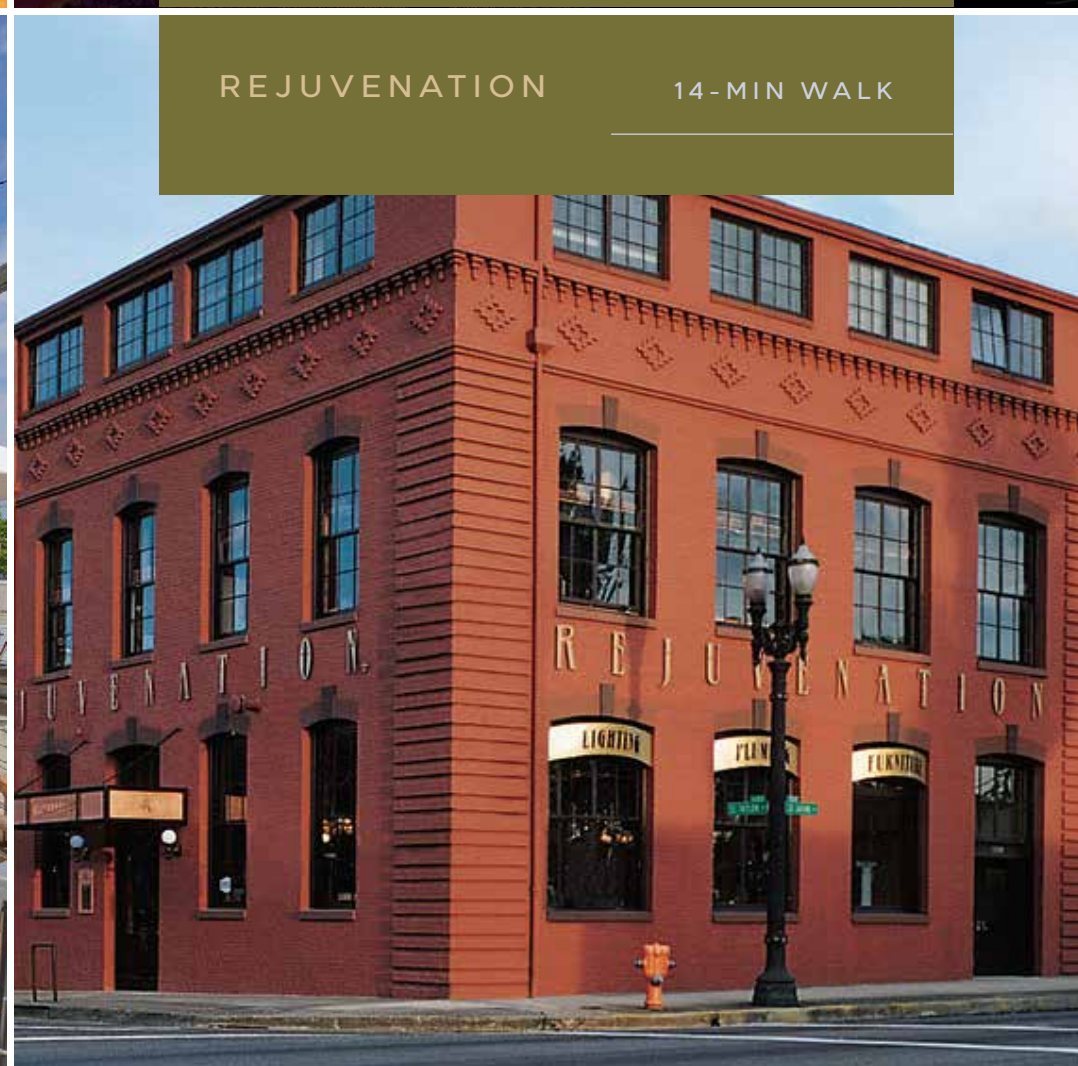
EVO

7-MIN WALK



REVOLUTION
HALL

8-MIN WALK

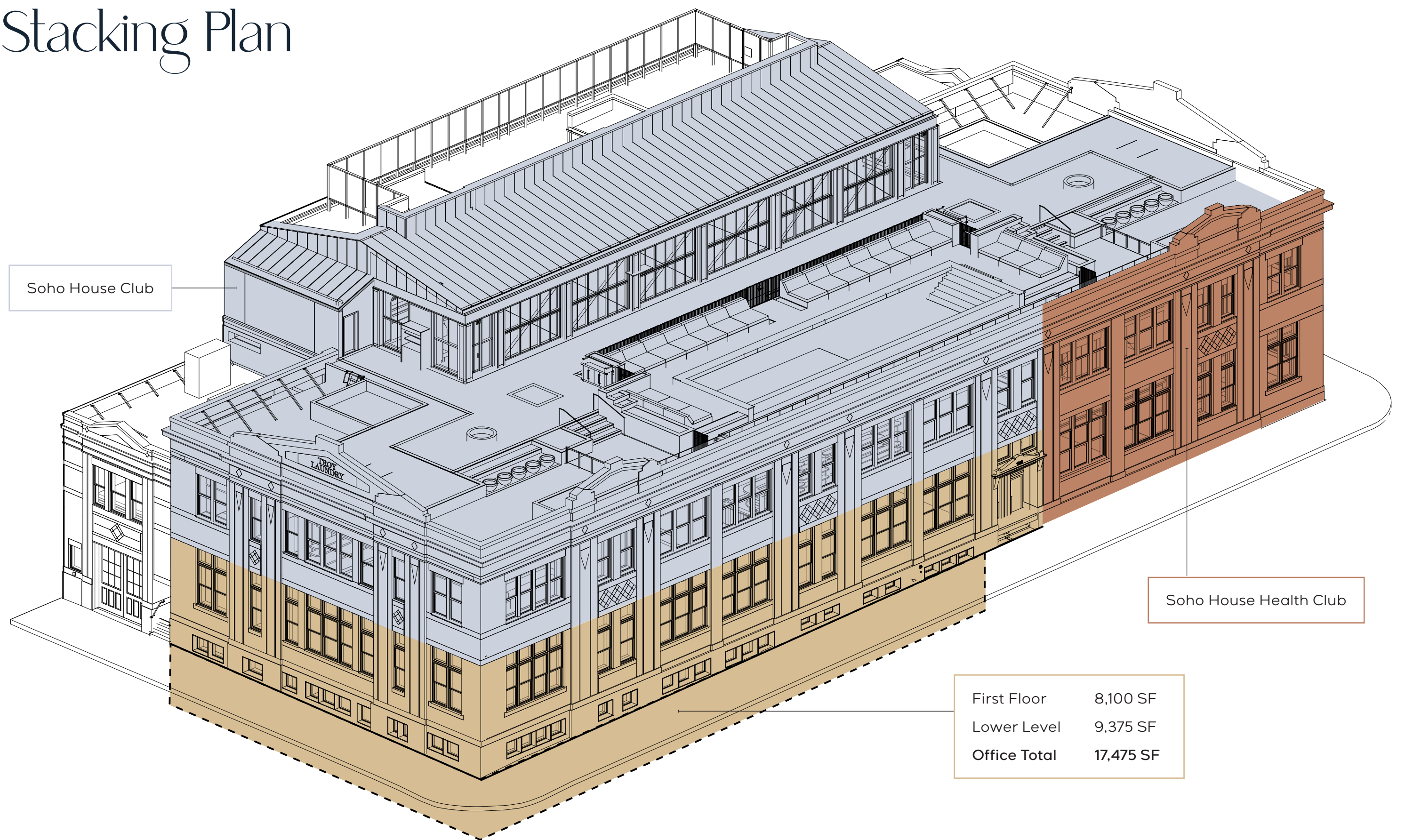


REJUVENATION

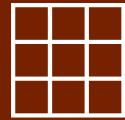
14-MIN WALK

Abundant
retail & lifestyle
amenities at
your fingertips

Stacking Plan



Meet your new neighbors



SOHO HOUSE

Soho House Portland, a private members club and the brand's first House in the Pacific Northwest, blends modern luxury with the building's industrial heritage. The House includes a rooftop pool, gym, restaurant and lounge, and performance space dedicated to showcasing local talent.

It will shine a spotlight on Portland's creative scene, tapping local artists for site-specific artwork in response to the "Rose City" nickname.



Memoir Buckman is multifamily living with style — built for creative, curious people who appreciate great design.

The property offers 132 units with a rooftop pool and entertainment spaces. The ground floor features a bespoke living room concept complete with library, coffee, and cocktail bar.

OPENING 2024



THE OFFICES AT TROY LAUNDRY ♦ KIDDER MATHEWS



“

We’ve been humbled to be part of Portland for over six years, hosting pop-up events and programming with our Cities Without Houses (CWH) members.

During that time, we’ve learned and experienced the best of the city’s culinary talent and thriving arts and film industries. I couldn’t be more excited to transform this beautiful building into our first Soho House in the Pacific Northwest.”

NICK JONES
Founder of Soho House

Memoir Residential combines hospitality
& design expertise to create better, more
inspired apartment living experiences.



THE OFFICES AT TROY LAUNDRY

HOME TO SOHO HOUSE PORTLAND & MEMOIR BUCKMAN

OFFICESATTROYLAUNDRY.COM

EXCLUSIVELY LEASED BY

SEAN MCCARTHY

503.721.2712

sean.mccarthy@kidder.com

GRANT GUERNSEY

503.721.2737

grant.guernsey@kidder.com

KIDDER.COM



OWNED BY

ADVENTUROUS
JOURNEYS

This information supplied herein is from sources we deem reliable. It is provided without any representation, warranty, or guarantee, expressed or implied as to its accuracy. Prospective Buyer or Tenant should conduct an independent investigation and verification of all matters deemed to be material, including, but not limited to, statements of income and expenses. Consult your attorney, accountant, or other professional advisor.